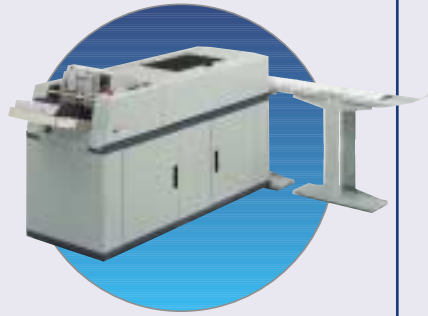


The **NEW** AS1200 PRESSURE SEALER



Optional High Capacity Sheet Feeder

PFE's high-capacity sheet feeder can hold up to 4,000 sheets of paper, ranging from 80-140 gsm. It is fitted with extractable, mobile paper hoppers, which can be easily changed or re-loaded in a matter of seconds. Fast and efficient machine loading is simple and ensures that production levels are maintained at an optimum at all times.



Options

- High Capacity Sheet Feeder (Over 4,000 forms)
- PFE Guillotines & Bursters - For continuous in-line processing
- Directional out-feed conveyor

Specifications

Primary Form sizes:	Depths - max. 16" min.7" Widths - max. 9½" min. 4¼"
Insert Size: <small>(dependant on form size)</small>	Depths - 2½" to 4" Widths - 4" to 7½"
Paper Weights:	80gsm to 140gsm
Form Folds:	All folds including 'Z', 'C' and 'V'
Form Security:	Double document detection
Machine Size: <small>(stand alone)</small>	L - 1920mm x W - 650mm x H - 1060mm
Machine Size: <small>(with hi-cap feeder)</small>	L - 2450 mm x W - 650mm x H - 1060mm
Weight: <small>(stand alone)</small>	260 kg

Speed

Sealing only	12,000 forms/hour maximum (A4)
Inserting	10,000 forms/hour maximum (A4)
Hi-cap feeder Inserting	9,000 forms/hour maximum (A4)

PFE PRODUCT RANGE

Mailing Machines
Desktop Mailing Systems
Office Mailing Systems
Modular Mailing Systems
Mail Printing Systems

• **Pressure Sealers**

• **Forms Handling Machines**

• **Office Products**



World Leaders

IN PRESSURE SEAL

PFE International Limited, Oakwood Hill
Industrial Estate, Oakwood Hill
Loughton Essex IG10 3TZ
Internet Address: www.pfe.co.uk
E-Mail: marketing@pfe.co.uk
Tel: 020 8502 1011
Fax: 020 8502 4187

Subsidiary Companies in USA, France, Germany, Portugal, Belgium, Eire and Singapore. Sales Offices throughout the UK.
PFE's policy is one of continuous improvement, and the right is reserved to modify or alter equipment specifications, without prior notice.





World Leaders

IN PRESSURE SEAL



The **NEW**

AS1200

PRESSURE SEALER

AS1200



Pressure Sealing and Document Inserting

The AS1200 is a combination of Pressure Sealing with the added advantage of document inserting and perimeter sealing which protects the inserted document. A variety of inserts can be processed including reply envelopes, customer information or advertisements. These are placed in up to 2 feed stations and inserted at the point of fold with the prime document.

Cycling at a maximum 10,000 filled forms per hour, the AS1200 is designed not only to reduce costs but also to guarantee fast and efficient mail processing, total product security and confidentiality.

Designed with a 30 job programme memory, the AS1200 is flexible and easy to use, offering a cost-effective solution to a wide range of mailing tasks.

Where a prompt response is required, a pre-paid return envelope can be enclosed.

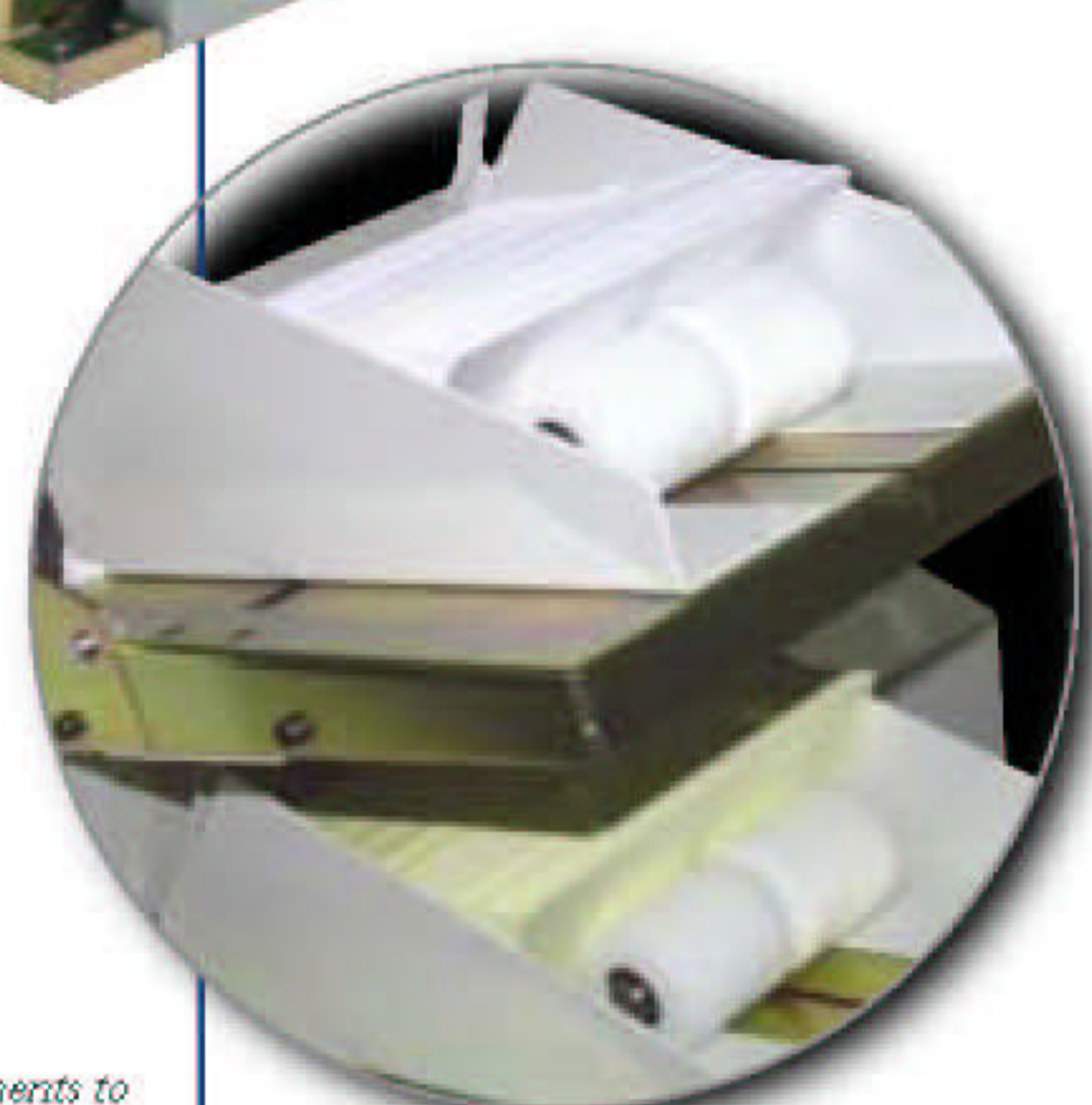


The Complete Solution - Maximising Revenue Potential

PFE have the in-house skill to design forms specifically to meet customers' requirements thus maximising savings and enhancing the professionalism of your organisation. The AS1200 allows the placement of "in the hand" advertisements. These inserts work more effectively for the advertiser as they are attractive and offer maximum space to convey their message.

Here are just a few examples:

- REDEMPTION COUPONS
- MEMBERSHIP & LOYALTY CARDS
- PROMOTIONAL MAILINGS
- DIRECT DEBIT MANDATES
- BUSINESS REPLY ENVELOPES
- INCENTIVE VOUCHERS
- BROCHURES
- INFORMATION LEAFLETS & MAPS



Documents to be inserted are placed in the feed stations and can be continually loaded while processing.



Emergency stop button for operator safety.



Single form processing to assist the operator and avoid loss of any documents.



Perimeter sealing which protects the content and the form.

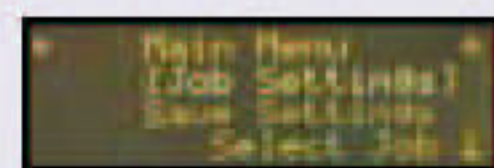


Easy access for setting perimeter seal to the

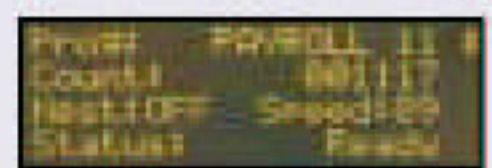
It's so easy!



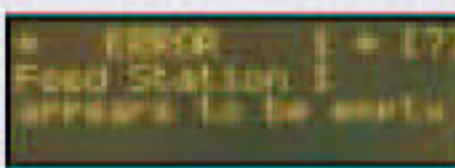
The large LCD display guides you through operating the machine - quickly and simply.



The main screen displays the current status of the machine.



Then simply choose a job from the list, and you're ready to go!



If the machine stops, the display will show you why - and what to do next.